

Creating a Research Plan



If you don't know where you are going,
any road will do. *Lewis Carroll*

Strategy

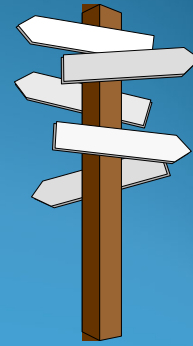
- Before you get an assignment know what resources are available to you



<https://www.law.miami.edu/iml/library>

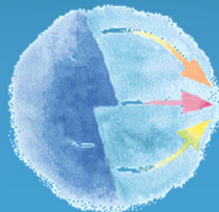
Understand the Assignment

- What information is needed?
- What are the time and money constraints?
- How should the answer be presented?



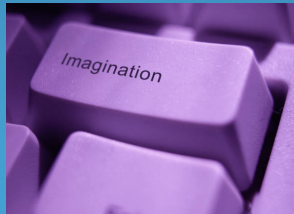
Strategy

- Analyze the specific problem
- **Verify jurisdiction.**
- Look at the information you were given for leads.



Strategy

- Outline issues, develop vocabulary
- Imagine how the issue has come up before.



Outline Research Plan

- Base your selection on:
 - What you already know
 - The kind of information needed.
 - The sources in which the information is available
 - The sources which are available to you.
 - The project deadline.

- Mr. Field has inherited a farm and farmhouse with historical significance in Redland (or the Redlands). He wants to turn it into a bed and breakfast. He has a problem, however. One side of the property is bordered by a busy restaurant, which is open long hours and is very noisy during the evening. Also, one of their signature dishes is roasted in an outdoor pit which is less than 100 feet from the farm. The outdoor pit is smelly and causes smoke to drift onto the Field property.
- Both types of pollution, air and noise, are in violation of local ordinances, but the restaurant owners just pay the fines and continue the operation. Mr. Field might have a private cause of action in nuisance. Please do some research into what is required to establish if a nuisance exists and whether air and/or noise pollution alone can be the basis of a nuisance suit.

Research Plan

- I. Preliminary Information
 - a. Jurisdiction:
 - b. Issue Statement:
 - c. Key Terms:
- II. Planning Your Research
 - a. Research sources to consult
 - i. Possible secondary sources for an analysis of the issue:
 - ii. Mandatory Primary Authority:

Research Plan

I. Preliminary Information

a. Jurisdiction:

b. Issue Statement:

c. Key Terms:

II. Planning Your Research

a. Research sources to consult

i. Possible secondary sources for an analysis of the issue:

ii. Mandatory Primary Authority:

III. Research Results

Secondary sources

Secondary Sources Checked	Search	Relevant information	Summary

Mandatory Authority

Statute Citation	Search	Summary	Good Law/Neg. Treatment
Regulations			
Cases			

(If there are many sources related to your research, you might want to create this form in Excel or another spreadsheet product.)

Other Sources to Check:

Research Sources to Consult

- Primary Sources
- Secondary Sources



Sources	Type of Information
Treatise	
Statutes (annotated for research)	
Legal Encyclopedia	
Cases	
Legal Dictionary	
Regulations	
Research Guide: Subject Guide to Treatises	
Citator (i.e. Shepards/Keycite)	

III. Research Results

Secondary sources

Secondary Sources Checked	Search	Relevant information	Summary

Mandatory Authority

Statute Citation	Search	Summary	Good Law/Neg. Treatment
Regulations			
Cases			

(If there are many sources related to your research, you might want to create this form in Excel or another spreadsheet product.)

